

TIMKEN MUSEUM OF ART

1500 El Prado
San Diego, CA 92101

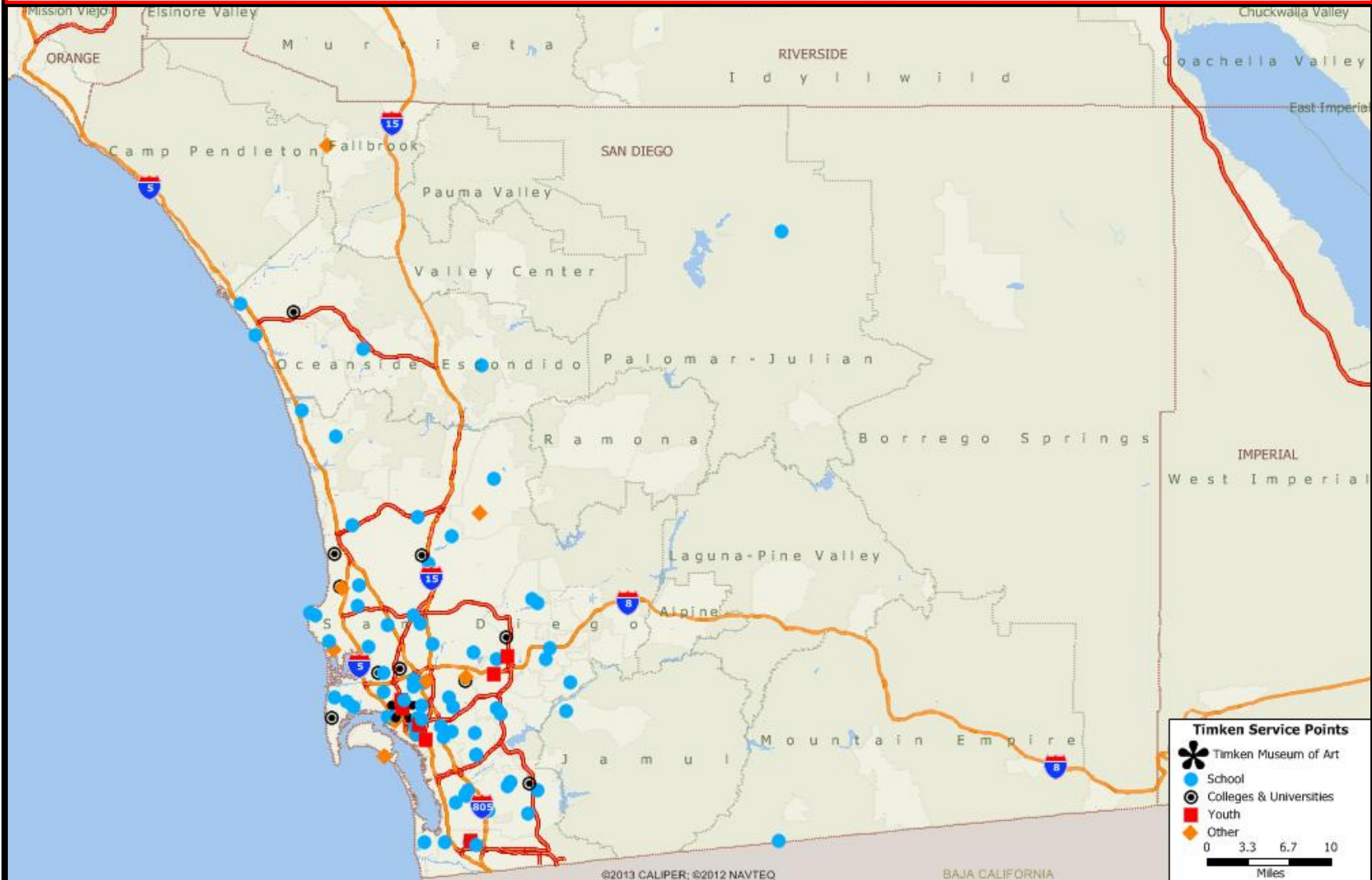
(619) 239-5548
timkenmuseum.org

The Timken Museum of Art preserves the Putnam Foundation Collection of European and American art for the education and benefit of present and future generations of San Diego area residents and visitors. The museum celebrates the important role of art as a way of enriching the lives and nurturing the creative spirit in all of us.

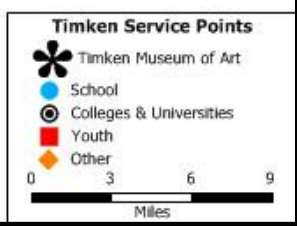
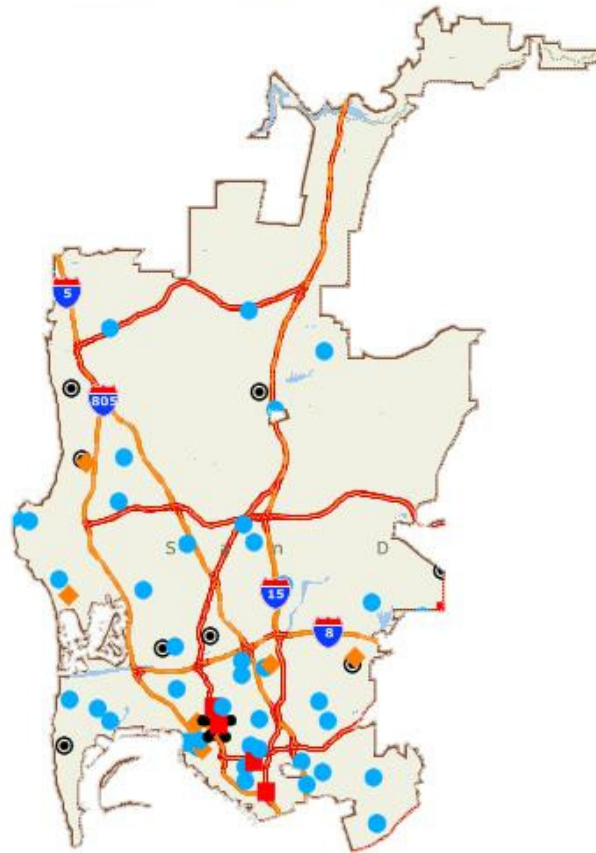
Each symbol on the map below represents an organization that used the Museum's education services in 2012-2013.



Maps created by the Association of Art Museum Directors with data supplied by the Museum and the Bureau of the Census with support from the National Endowment for the Arts. For more information on the mapping project please contact Andy Finch afinch@aamd.org.



For a list of organizations in the City of San Diego served by the Timken Museum of Art, please see following page.



©2013 CALIPER; ©2012 NAVTEO

Organizations in the City of San Diego served by the Timken Museum of Art.

COLLEGES AND UNIVERSITIES

Miramar Community College
National University
Platt College
Pt. Loma Nazarene
The Art Institute
University of San Diego

SCHOOLS

Academy Our Lady of Peace
Albert Einstein Academy School
Cambridge School
Charter School of SD
Chinese school of San Diego
Chollas-Mead Elementary School
City Tree Christian School
Francis Parker
Garfield Elementary School
Golden Hills Elementary
Grant Elementary
Hancock Elementary School
Heritage Christian School
High Tech High School
International School
Kimbrough Elementary School
King Chavez High School
Lafayette Elementary
Logan Elementary
Los Altos Elementtary
Mendoza Elementary School
Monarch School
Montessori School of SD
Montgomery Middle School
Morse High School
Notre Dame Academy
Oak Park Music Conservatory
Ocean Beach Elementary School
Pacific Beach Elementary
Patrick Henry High School
Point Loma High School
Roosevelt Middle School
San Diego School of Creative and Performing Arts
School of Creative Performance

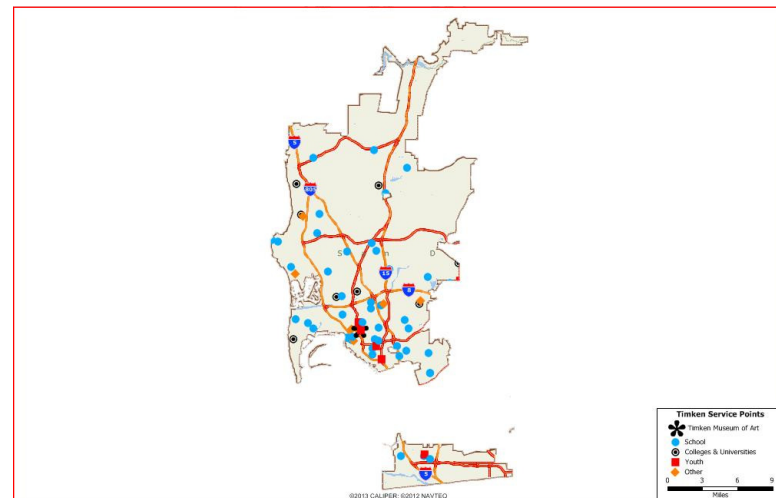
Scripps Elementary School
Sprekels Elementary
St. Augustine High School
St. Didacus Parish School
St. Rita's School
The Waldorf School of San Diego
Walter J Porter Elementary School
Whittier School (Brawley)

YOUTH

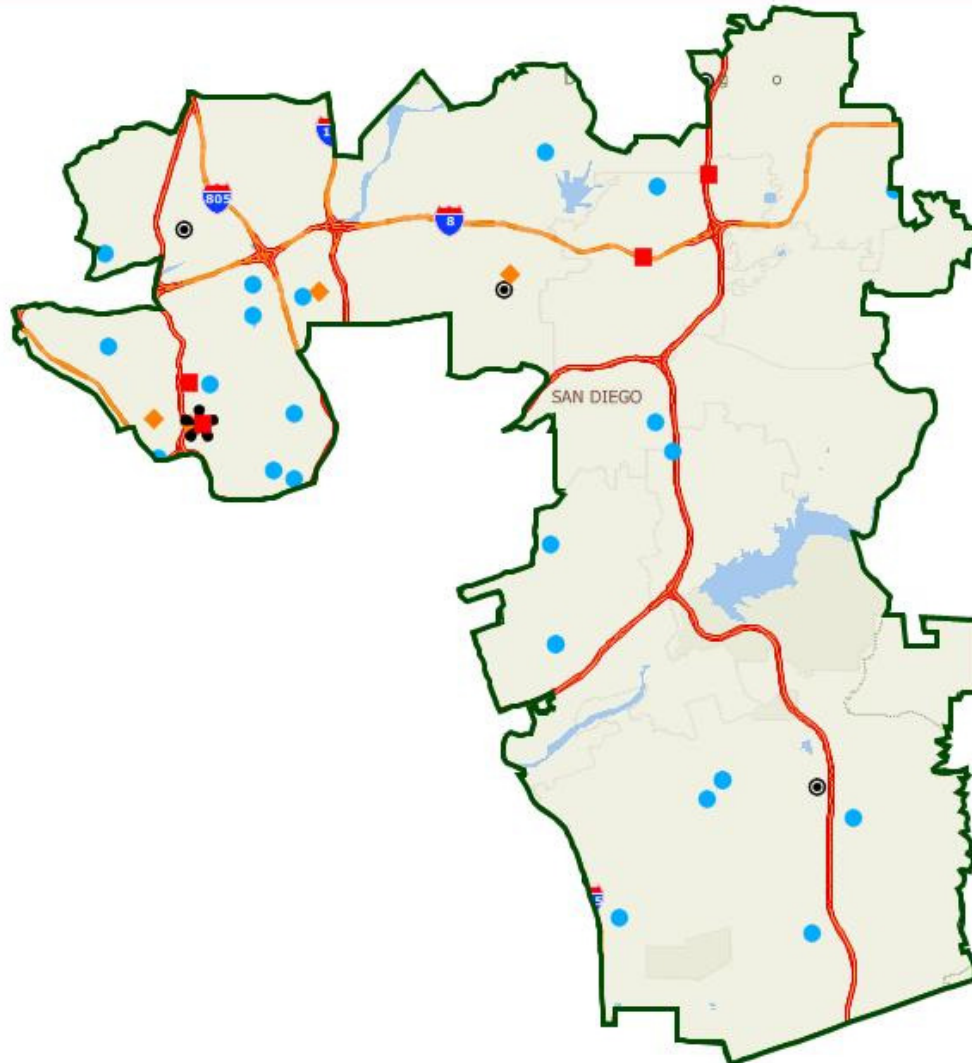
ARC Art Camp
Border View YMCA
Camacho Summer camp
Emerson Bandini Pre-school
Girl Scouts

OTHER

American Legion
Embassy English School
Jr. League of SD
Language Academy
San Diego Art Institute
SDMA Docents
St. Paul's Lutheran Church



For a list of organization in the 53rd Congressional District served by the Timken Museum of Art, please see following page.



Timken Service Points

- Timken Museum of Art
- School
- Colleges & Universities
- Youth
- Other

0 1 2 3
Miles

HIGHER EDUCATION

Chula Vista Learning Center
Grossmont College
Platt College
The Art Institute

SCHOOLS

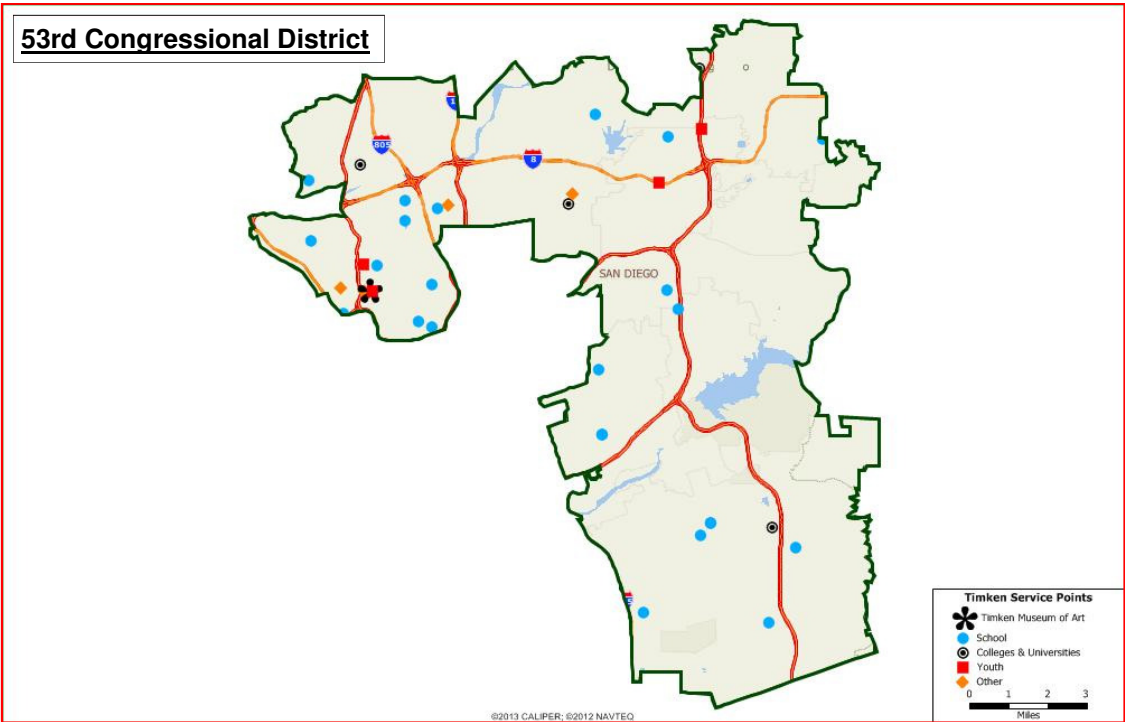
Academy Our Lady of Peace
Albert Einstein Academy School
Bonita Vista High School
Bonita Vista High School
City Tree Christian School
Francis Parker
Garfield Elementary School
Golden Hills Elementary
Grant Elementary
Literacy First Charter School
Lutheran High School
Morse High School
Mt. Miguel High School
Mt. Vernon Elementary School
Murray Manor Elementary School
Olimpian High School
Olympic View Elementary School
Parkview Elementary
Patrick Henry High School
Roosevelt Middle School
San Diego School of Creative and Performing Arts
School of Creative Performance
St. Augustine High School
St. Didacus Parish School

YOUTH

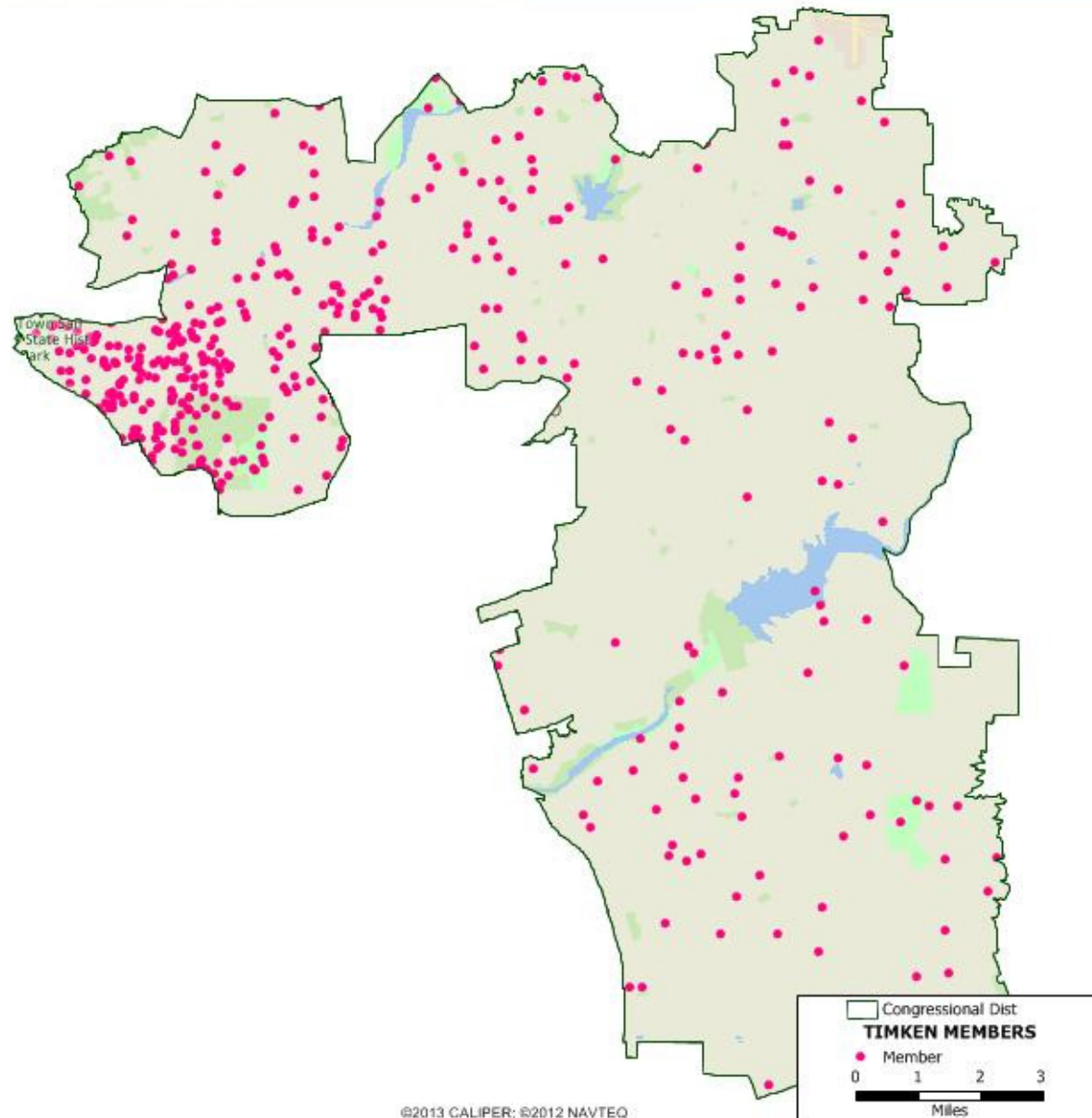
Camacho Summer camp
East County YMCA
Girl Scouts
Spring Valley/La Mesa summer camp

OTHER

American Legion
Jr. League of SD
Language Academy
San Diego Art Institute
SDMA Docents



The Timken has 414 individual and family memberships in the 53rd Congressional District.



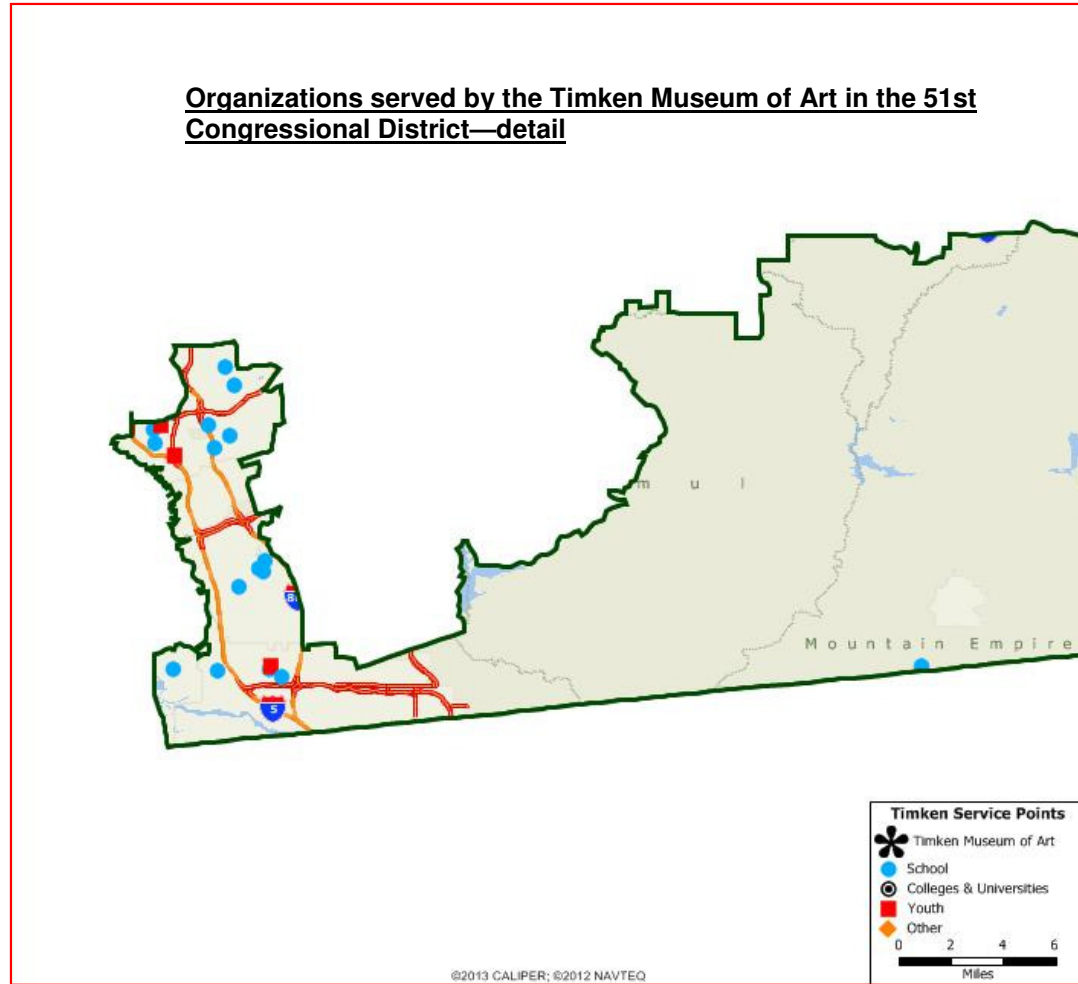
SCHOOLS

- Chollas-Mead Elementary School
- Chula Vista High School
- Hilltop Elementary
- Hilltop High
- Hilltop Middle school
- Imperial Beach Charter School
- Imperial High School
- Kimbrough Elementary School
- Logan Elementary
- Los Altos Elementary
- Mendoza Elementary School
- Montgomery Middle School
- Oak Park Music Conservatory
- St. Rita's School
- Tecate Elementary
- The Waldorf School of San Diego
- Walter J Porter Elementary School

YOUTH

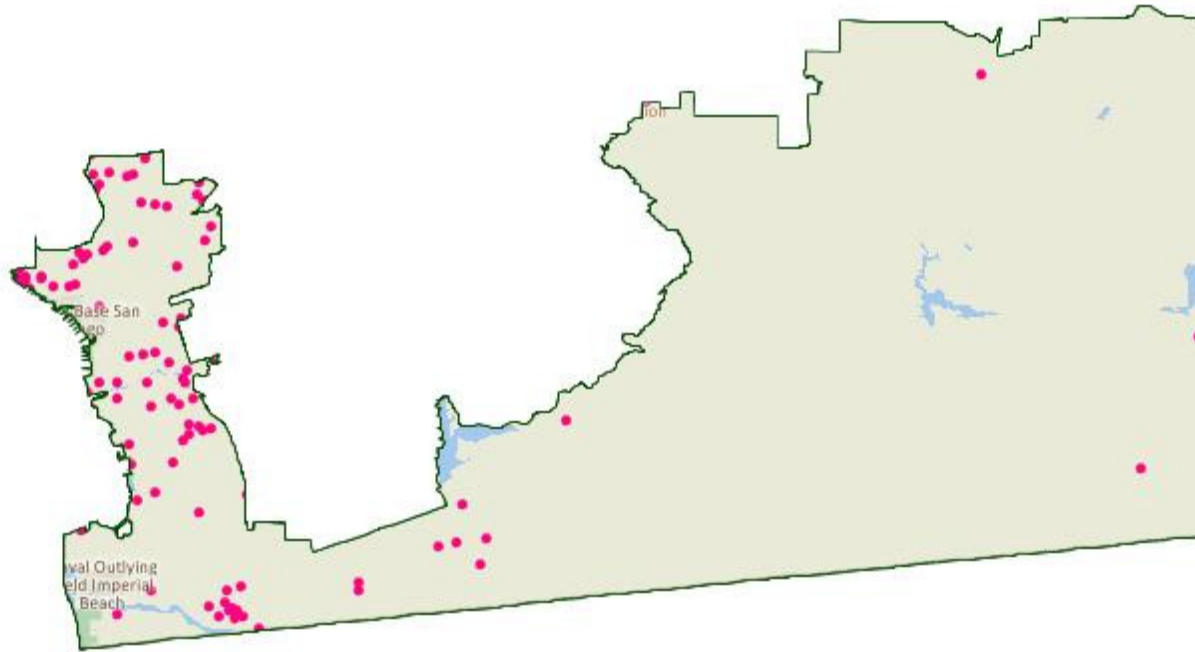
- ARC Art Camp
- Border View YMCA
- Emerson Bandini Pre-school

Organizations served by the Timken Museum of Art in the 51st Congressional District—detail



©2013 CALIPER; ©2012 NAVTEQ

The Timken has 111 individual and family memberships in the 51st Congressional District.



COLLEGES & UNIVERSITIES

Miramar Community Colleg
Pt. Loma Nazarene
University of San Diego

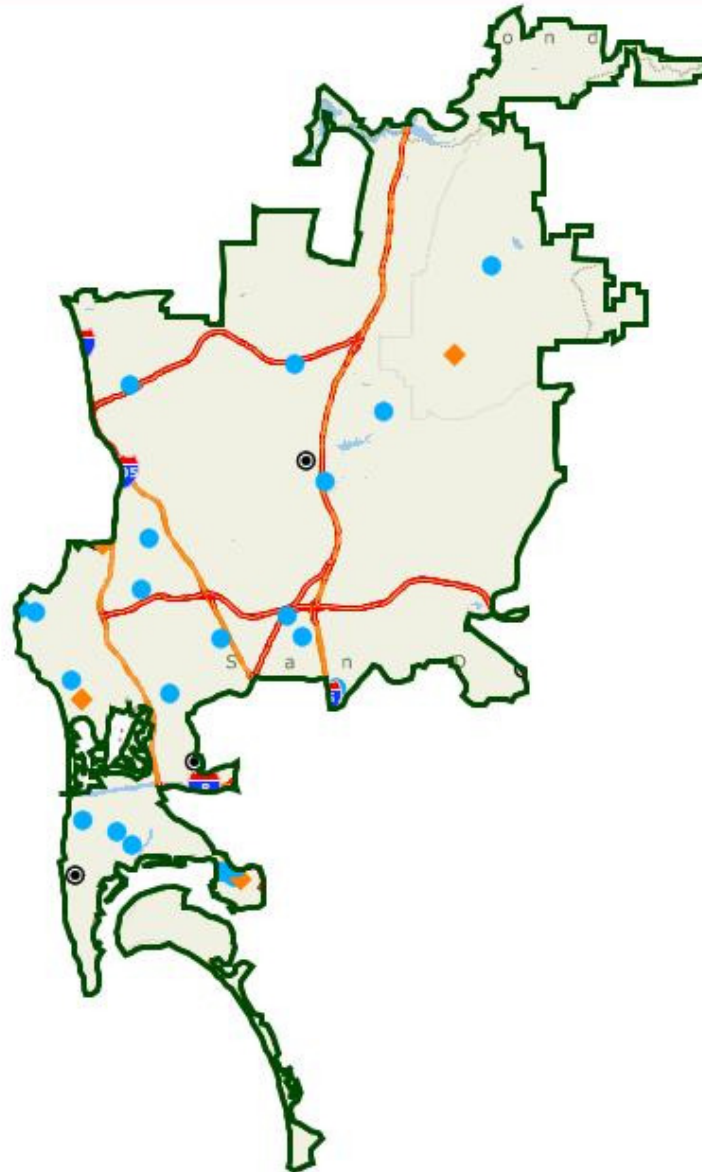
SCHOOLS

Bishop's School
Cambridge School
Charter School of SD
Chinese school of San Diego
Hancock Elementary School
Heritage Christian School
High Tech High School
International School
King Chavez High School
La Jolla Elementary
Lafayette Elementary
Monarch School
Montessori School of SD
Notre Dame Academy
Ocean Beach Elementary School
Pacific Beach Elementary
Point Loma High School
Poway High School
Scripps Elementary School
Sprekels Elementary
Whittier School (Brawley)

OTHER

Alzheimers group
Bellus Academy
Bilingual Kids
Embassy English School
St. Paul's Lutheran Church

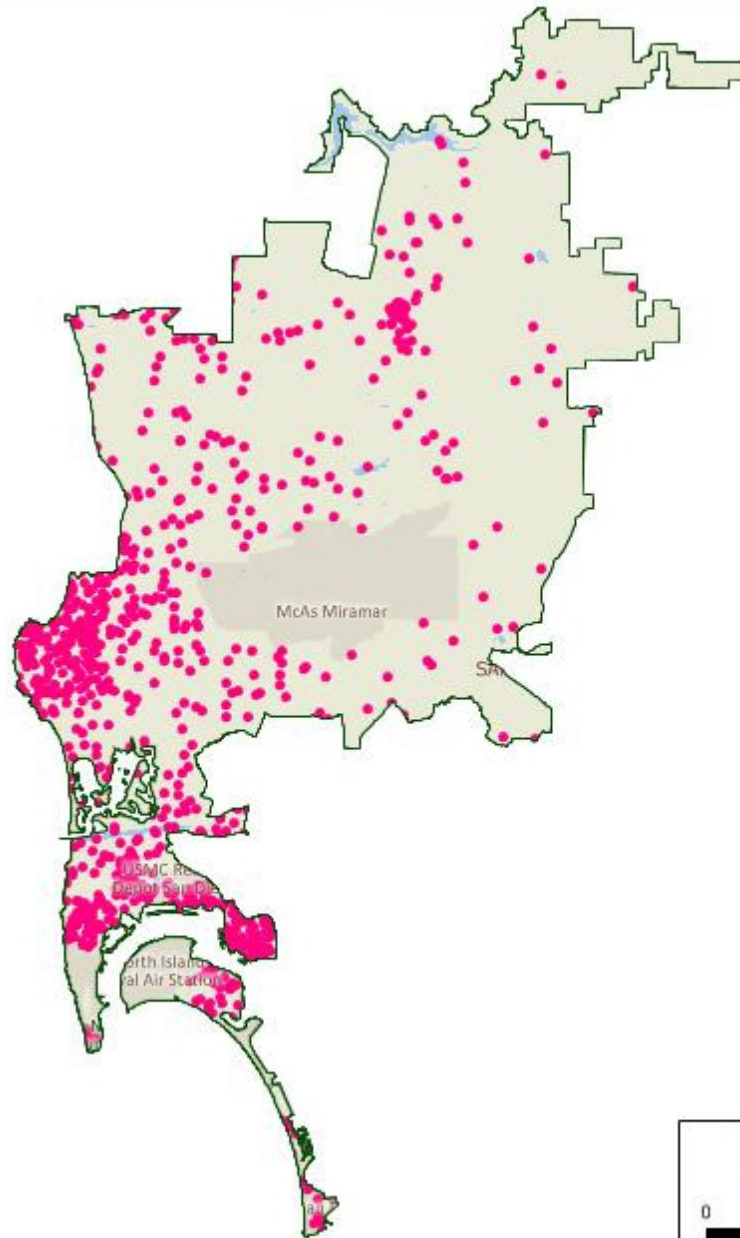
**Organizations served by the Timken
Museum of Art in the 52nd Congressional
District**



©2013 CALIPER; ©2012 NAVTEQ



The Timken has 829 individual and family memberships in the 51st Congressional District.



From the Museum's website for Educator Programs and Resources

The Timken offers the following resources and programs that help educators incorporate the study of art into their classroom:

Teacher Guide to the Collection in English and Spanish:

The Teacher Guide contains a number of ideas and lesson plans to help teachers prepare students for their visit to the Timken. The guide includes information about ten works in the Museum's collection that represent painting from the fourteenth century in Italy to the nineteenth century in the United States. The Teacher's Guide introduces questions and activities for students and offers teaching ideas.

Teacher Guide en Español

Teacher Workshops

Led by the Education Department staff, Teacher Workshops are designed to acquaint K-12 teachers with the Museum's resources. For more information, call (619) 239-5548 x105 or email krosenberg@timkenmuseum.org.

Collaborative Arts Resources for Education (CARE)

Collaborative Arts Resources for Education (CARE) is an arts education initiative offered by four San Diego arts organizations: the Museum of Photographic Arts (MOPA), Mingei International Museum, La Jolla Playhouse and the Timken Museum of Art. An arts-based education program for Title I elementary schools, CARE includes an artist-in-residence program in elementary classrooms, teacher in-service workshops, and a website. For more information and to download free lesson plans and images go to www.carearts.org.

AERO San Diego

The Timken is a member of San Diego's Arts Education Resource Organization, AERO, a community of arts organizations that work together to create a culture of arts education within county public schools through networking, advocating, evaluating and supporting high quality standards based programs.

AERO, supported by the San Diego County Office of Education, has issued its highest Seal of Approval to the Timken as all of the museum's school programs are standards-based. AERO's highest Seal of Approval is obtained at the end of each school year, once members have conducted a standards-based self-evaluation of their school programs.